

FLOW RATE

Mass Flow Rate (max.): 7 device sizes up to 28,000 kg/h

PRESSURE RATING

100 bar [1,450 psi] TCM 5500 - TCM 028k
 200 bar [2,900 psi] TCM 0325 - TCM 3100

ACCURACY (LIQUIDS)¹⁾

Basic Accuracy (Mass Flow): ± 0.1 % of flow rate
 Repeatability (Mass Flow): ± 0.05 % of flow rate
 Zero Stability: ± 0.01 % of full scale

ACCURACY (GASES)

Basic Accuracy (Mass Flow): ± 0.5 % of flow rate
 Repeatability (Mass Flow): ± 0.25 % of flow rate

DENSITY

Density Range: up to 2,500 kg/m³ [2.5 g/cm³]
 Density Accuracy: ± 1.0 kg/m³ [± 0.001 g/cm³]
 Density Repeatability: ± 0.5 kg/m³ [± 0.0005 g/cm³]

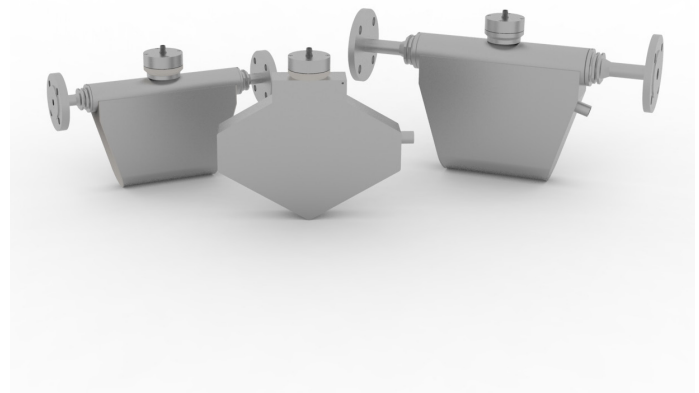
TEMPERATURE

Process Temperature Range:
 Compact: -40 °C ... +80 °C [-40 °F ... +176 °F]
 Standard temperature: -40 °C ... +150 °C [-40 °F ... +302 °F]
 High temperature: -40 °C ... +200 °C [-40 °F ... +392 °F]

Ambient temperature: -40 °C ... +60 °C [-40 °F ... +140 °F]
 Storage temperature: -40 °C ... +70 °C [-40 °F ... +158 °F]

FEATURES

- RS485 RTU (Modbus)
- Stainless Steel housing material
- Excellent repeatability
- Small-Size Design



BENEFITS

- ▶ Permanent visual status feedback of metering conditions
- ▶ Ideal for dynamic applications
- ▶ Plug and Play for Transmitter adaption
- ▶ Exchangeability of Transmitter in the field

ELECTRONICS

Power Supply: 24 V DC
 Interfaces: RS485 RTU (Modbus)
 Connector: M12 5 Pol

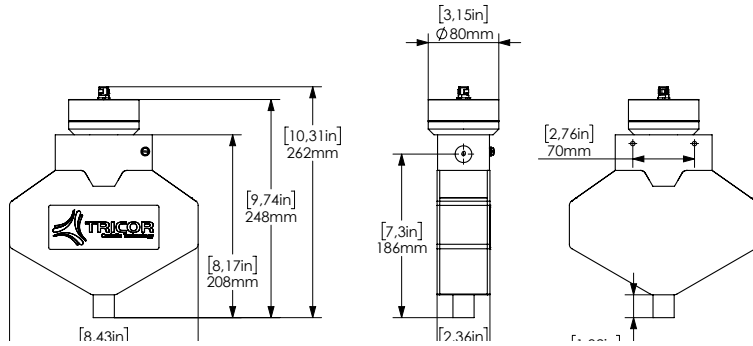
VISUAL STATUS FEEDBACK

Green: Normal Operation
 Yellow: Startup or Indication of worse operational conditions
 Red: Critical system Error

¹⁾ Stated flow accuracy combines the effects of repeatability, linearity and hysteresis.

CLASSIC Serie | TCA Coriolis Transmitter

TCM 0325 / 0650



METER DIMENSIONS²⁾ AND WEIGHTS

TCM 0325 / 0650

Weight: 5.9 kg [13 lb]

TCM 1550 / 3100

Weight: 9.9 kg [21.8 lb]

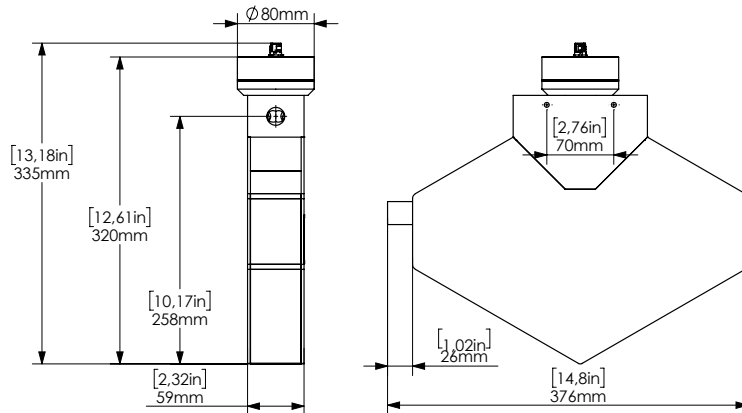
TCM 5500 / 7900

Weight: 7.9 kg [17.4 lb]

TCM 028K

Weight: 10.9 kg [24 lb]

TCM 1550 / 3100

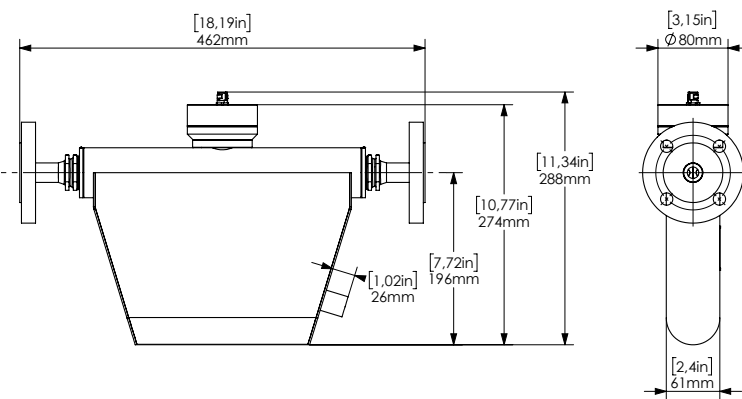


PLANNED APPROVALS

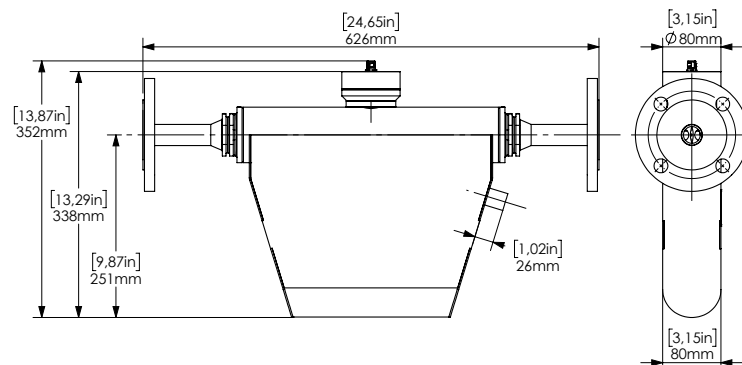
ATEX
IECEX
CSA
WELMEC 7.2

²⁾ Drawing of the Meter Dimensions reflects one standard connection, other connections on request (Installation length can vary depending on selected connection).

TCM 5500 / 7900



TCM 028K





KEM Flow Measurement GmbH



+49 9941 9423-0



Wetzeller Straße 22
93444 Bad Kötzing
Germany



info@kemflow.com



www.kemflow.com